



Shropshire – Quarterly Economic Update

Each quarter Shropshire Chamber takes part in the British Chambers of Commerce national economic survey. Below you will see the results for Shropshire, trending from as far back as 2009.

If you and your company would like to take part in these surveys please contact policy@shropshire-chamber.co.uk giving your name, company name and the e mail to which reminders should be sent. Please note this is only open to businesses in Shropshire and Telford & Wrekin. Those in neighbouring counties should approach the [British Chambers of Commerce](#) to locate their nearest BCC accredited chamber. This survey is open to businesses from all sectors including public sector and third sector. The survey is open to any size of business from micro to massive.

The data is used both locally and nationally to lobby those in power on the main topics of concern. The national survey is highly respected and is used by Central Government to understand the economic situation and pressures facing businesses in the UK.

EXECUTIVE OVERVIEW

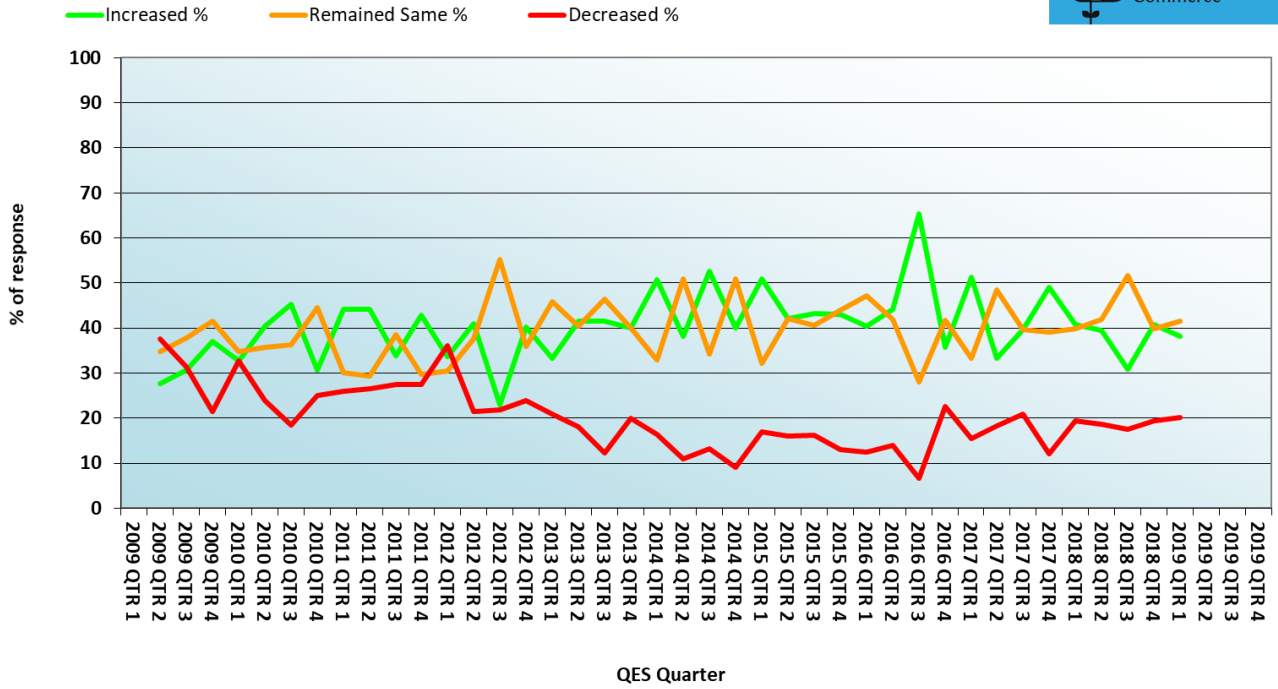
Executive Overview **Qtr. 1 – 2019 (Survey undertaken over three weeks in Feb/March 19)**

Headline **MOVING ON BUT BREXIT WEARY**

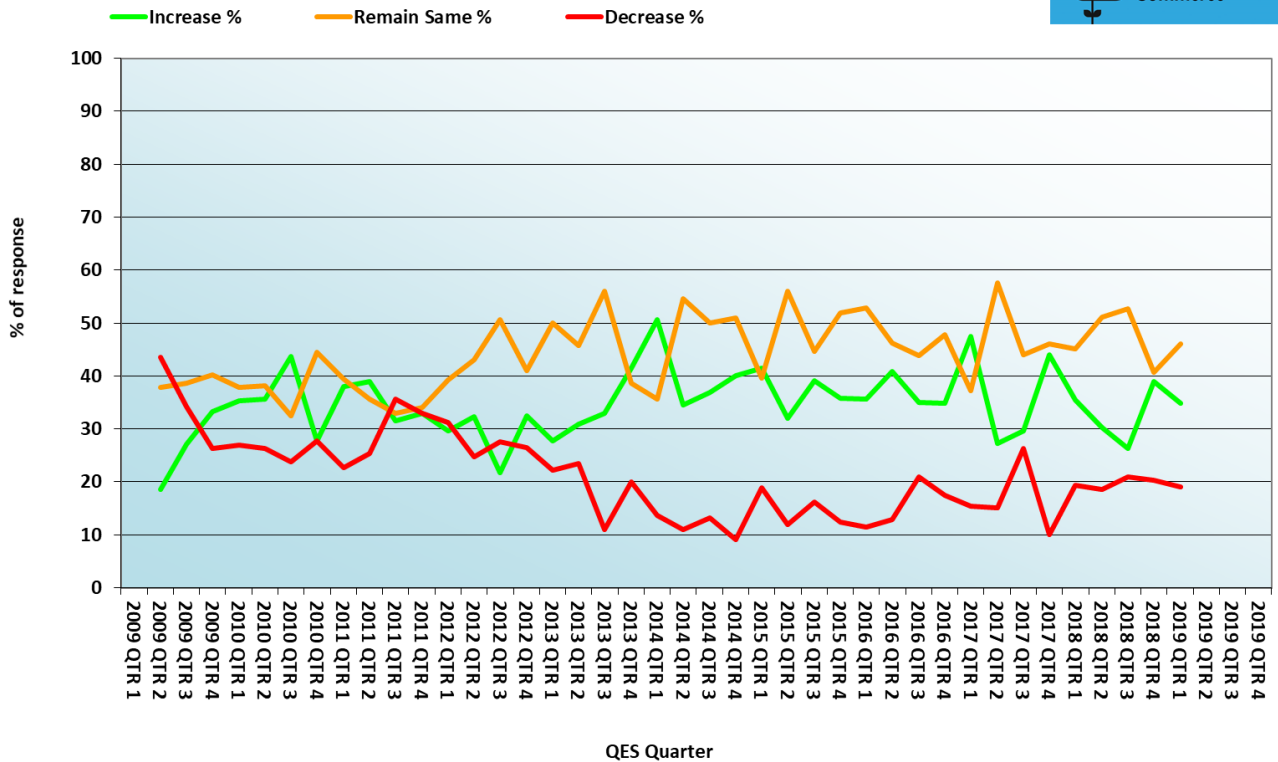
Domestic sales have become more static while exports have risen though the pace is slowing, but it is still a positive picture. Staffing levels have remained static, after the previous jumps but going forward employers project a slight rise in recruitment. Though only 50% employed in the last ¼ yet of those 75% reported difficulty recruiting staff. The percentage of staff now being employed from outside the area has increased, though still low numbers despite skill shortages. Cashflow remained static while those working to full capacity fell slightly. There was a slight upturn in the proposed spend on investment for training and plant. Business confidence remained stable. Once again competition was the main fear, followed by taxes and rates. Next quarter should be after Brexit, if not delayed, and that should really highlight the business sentiment on the state of the economy.

UK SALES

UK Sales - for the past three month

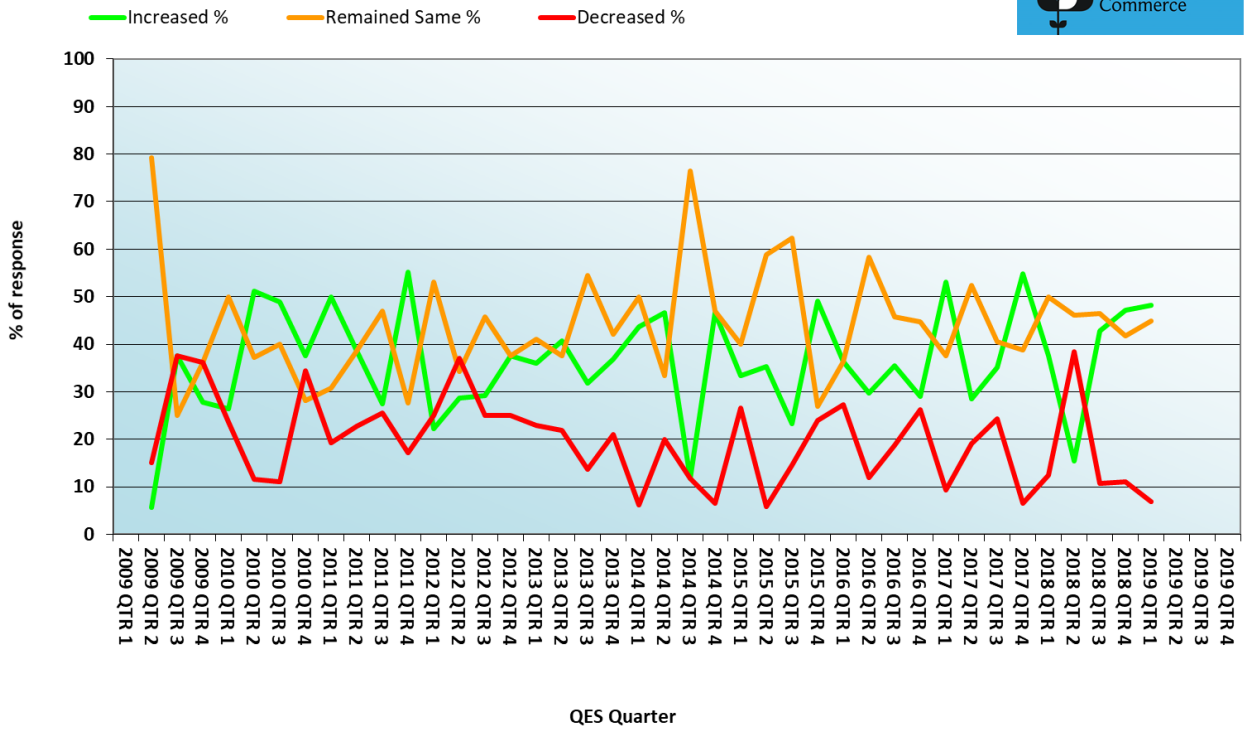


UK Orders - anticipated for the next three months

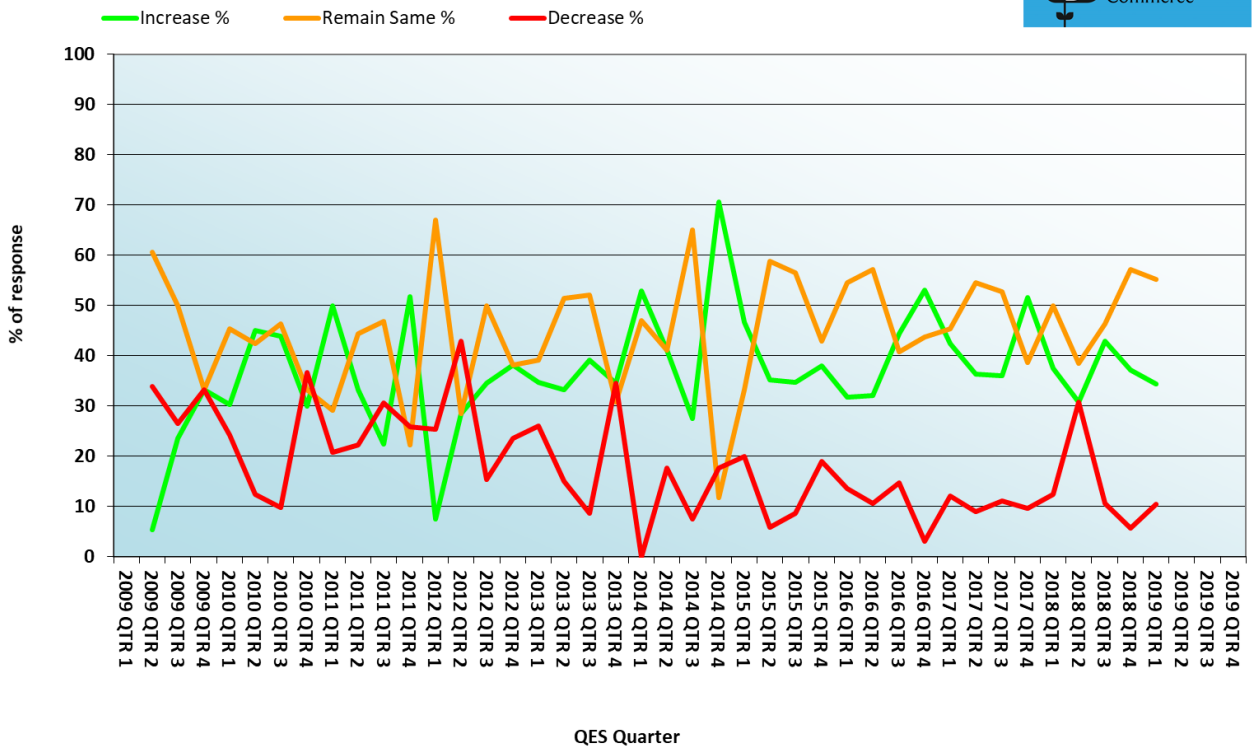


EXPORTS

Export Sales - for the past three months

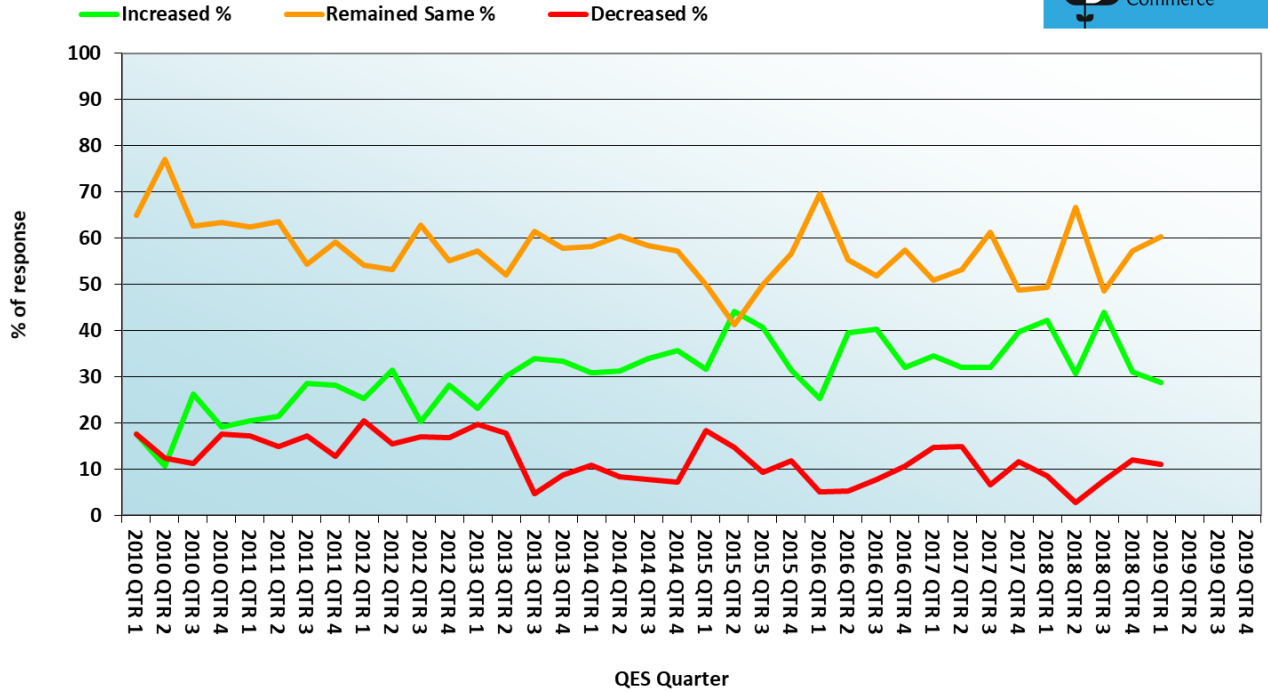


Export Orders - anticipated for the next three months

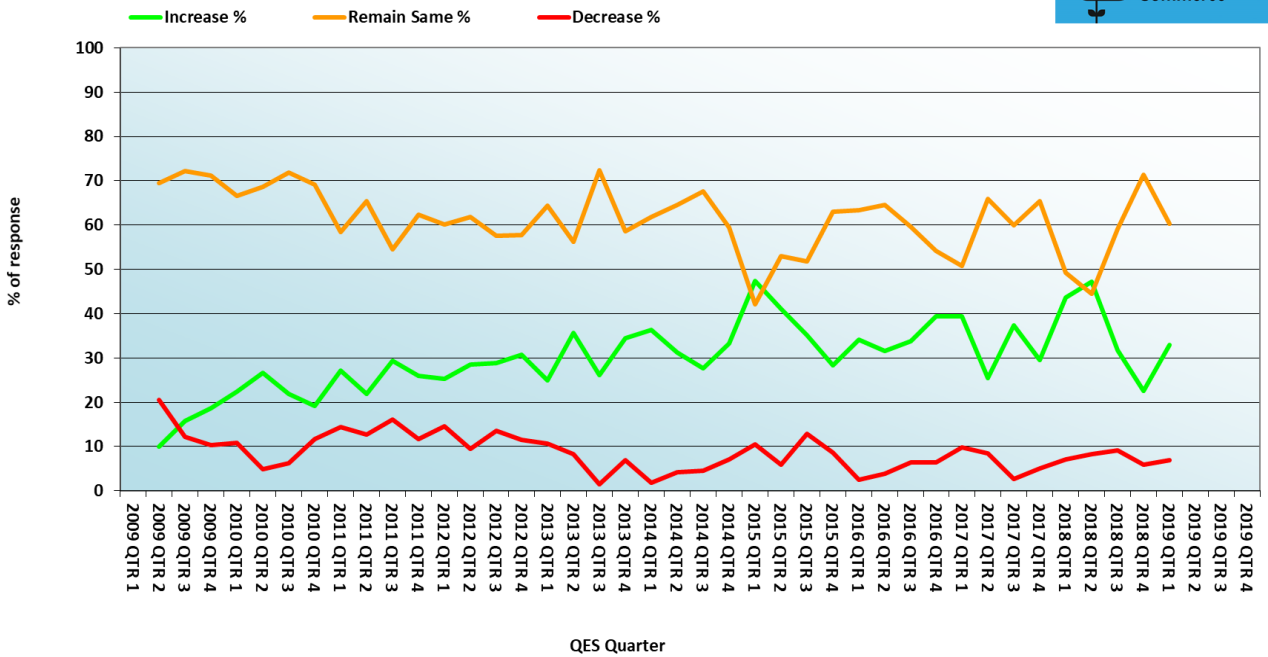


STAFF

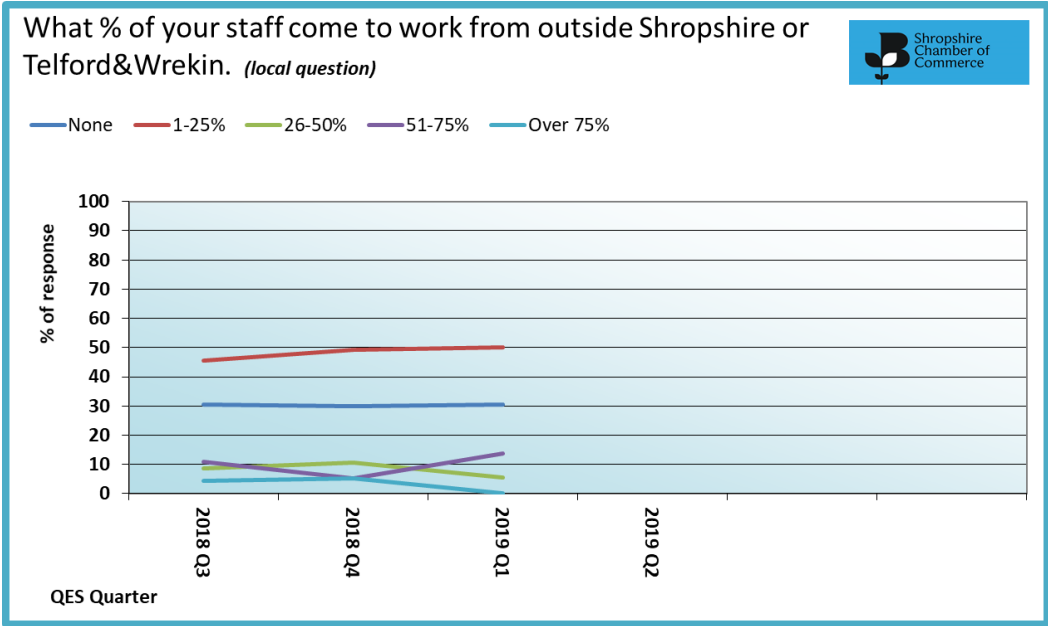
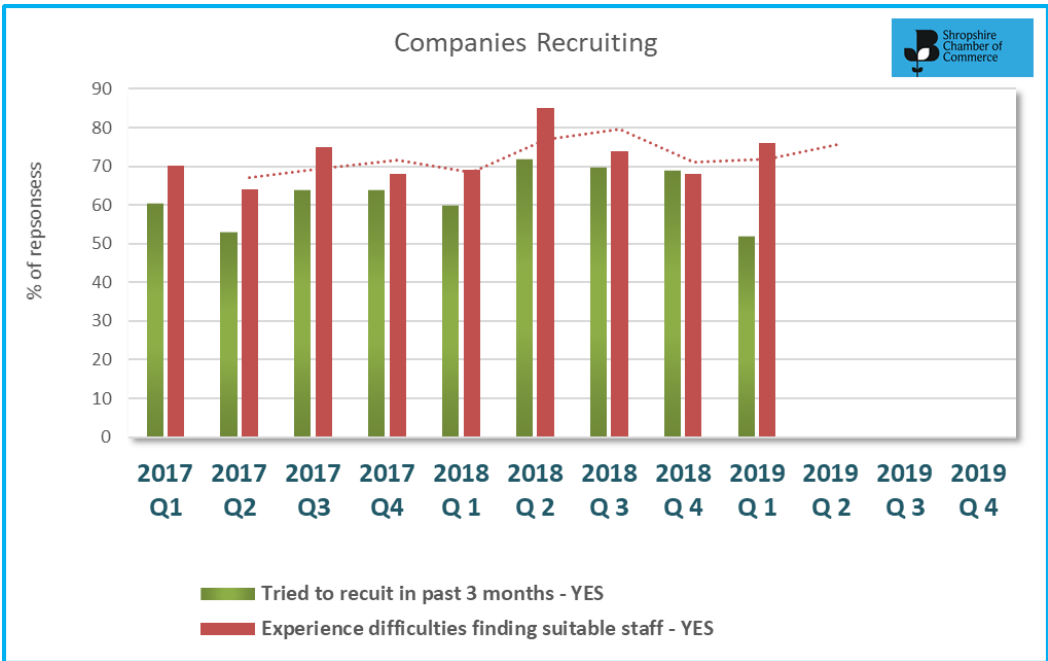
Workforce - past 3 months



Workforce - anticipated in the next three months



STAFF...continued

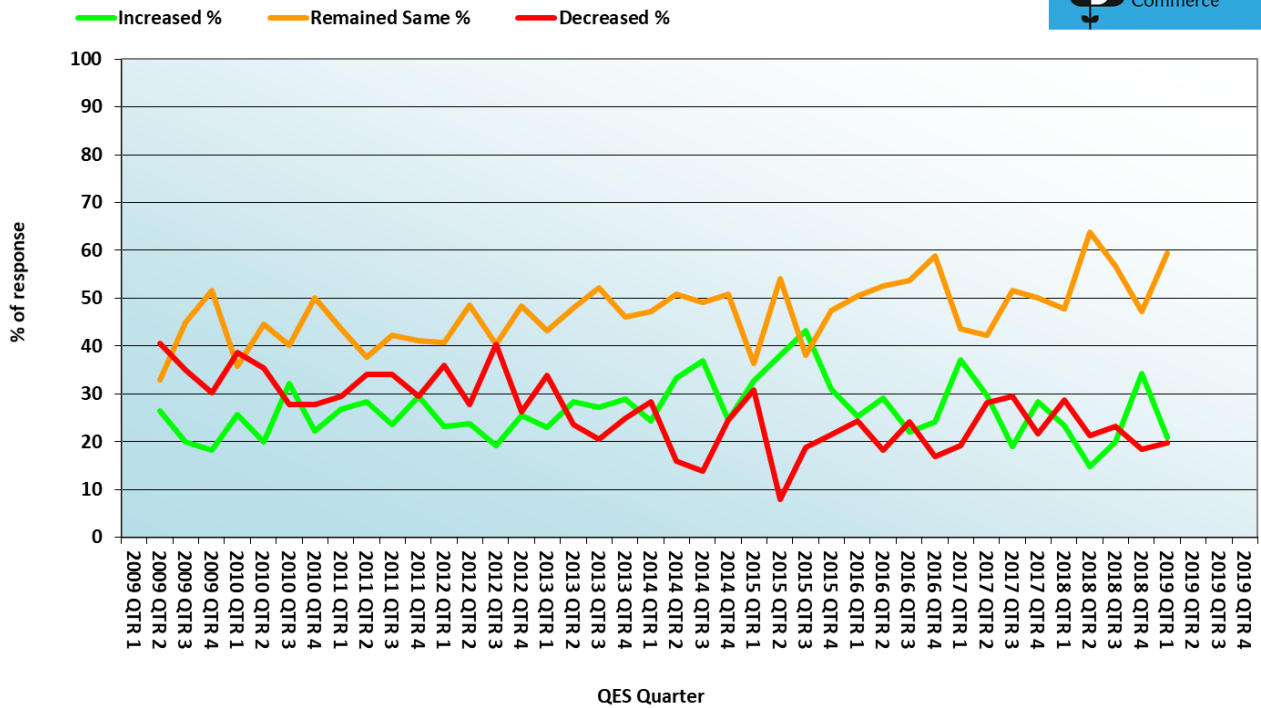


What barriers do you feel stop people coming to work in Shropshire?

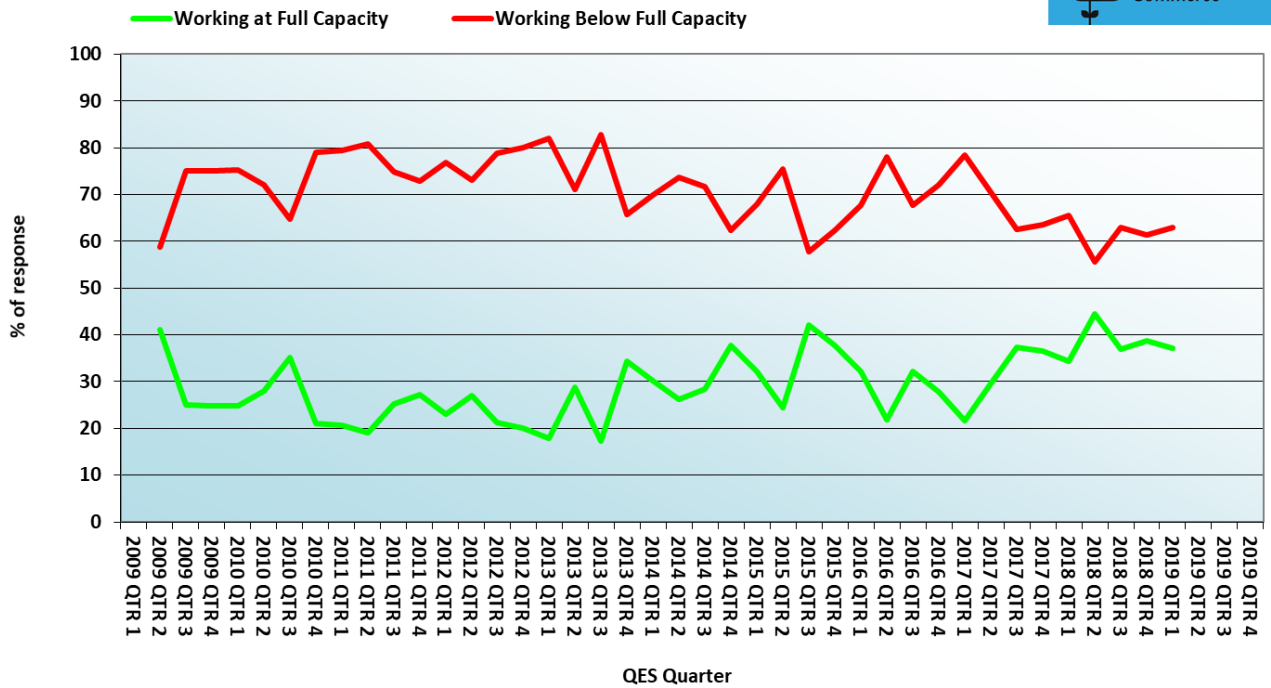
Shropshire Chamber of Commerce

CASH & CAPACITY

Cash Flow - how has it performed in the past three months

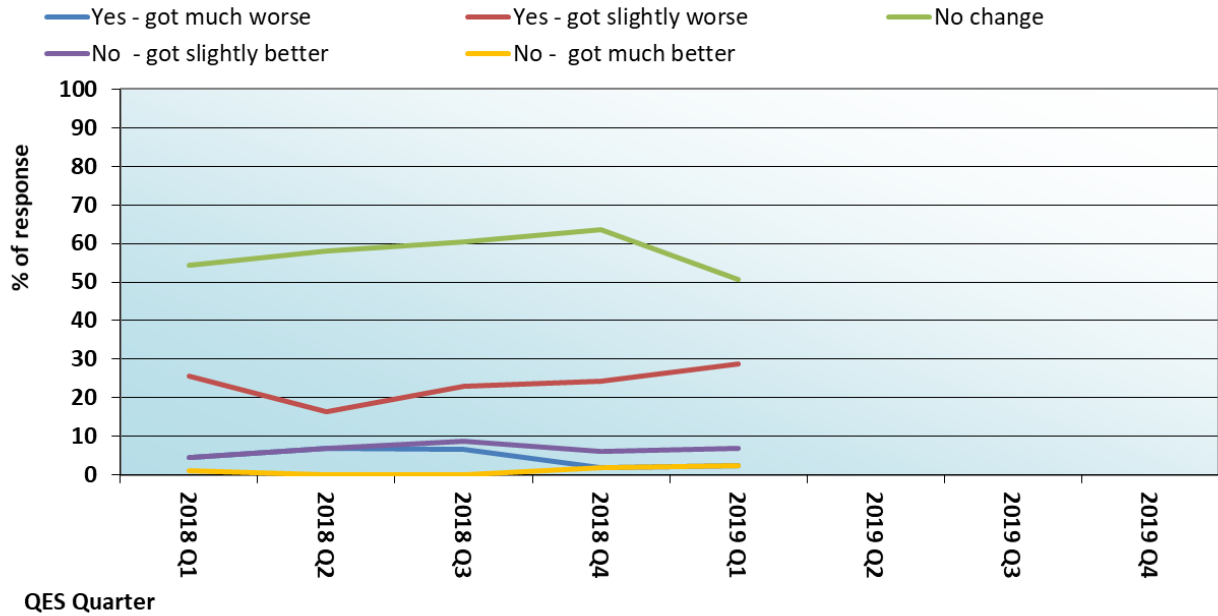


Capacity - working at full or below capacity

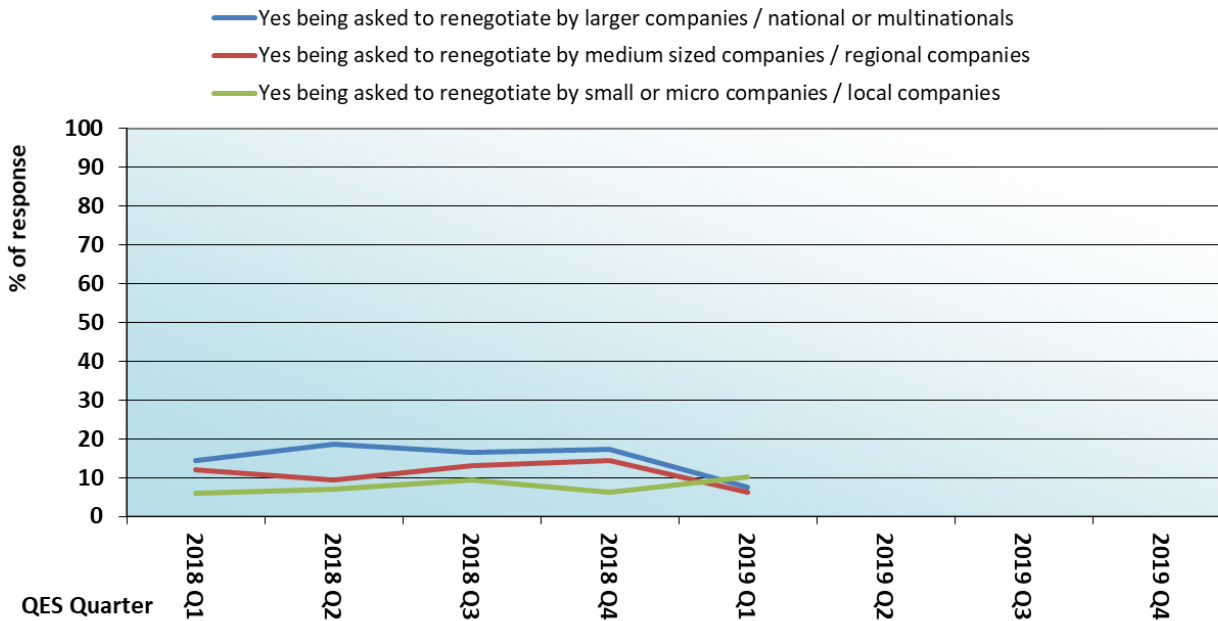


CASH & CAPACITY...continued

Have the number of outstanding payments due to your business got better or worse, generally? (local question)

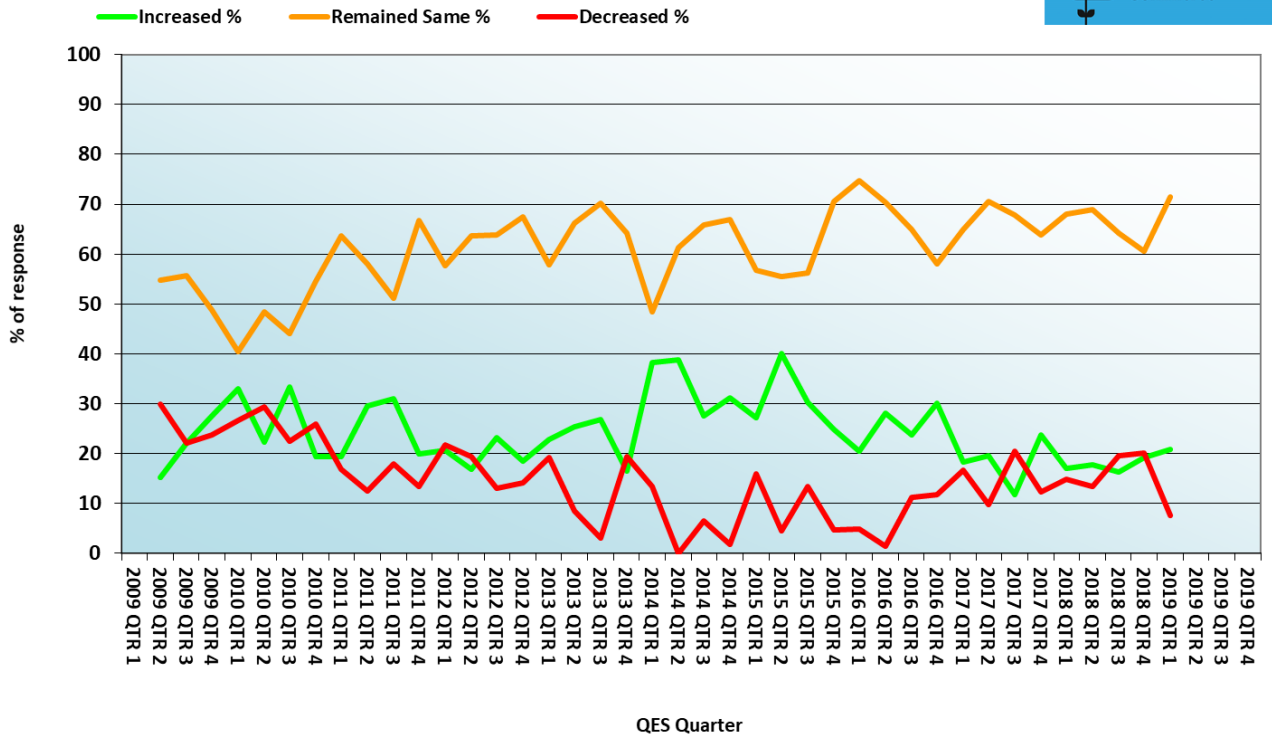


Are your suppliers asking you to renegotiate your payment contracts with them to less favorable terms? If so which types of companies are asking you to accept new contract terms? (multi choice - local question)

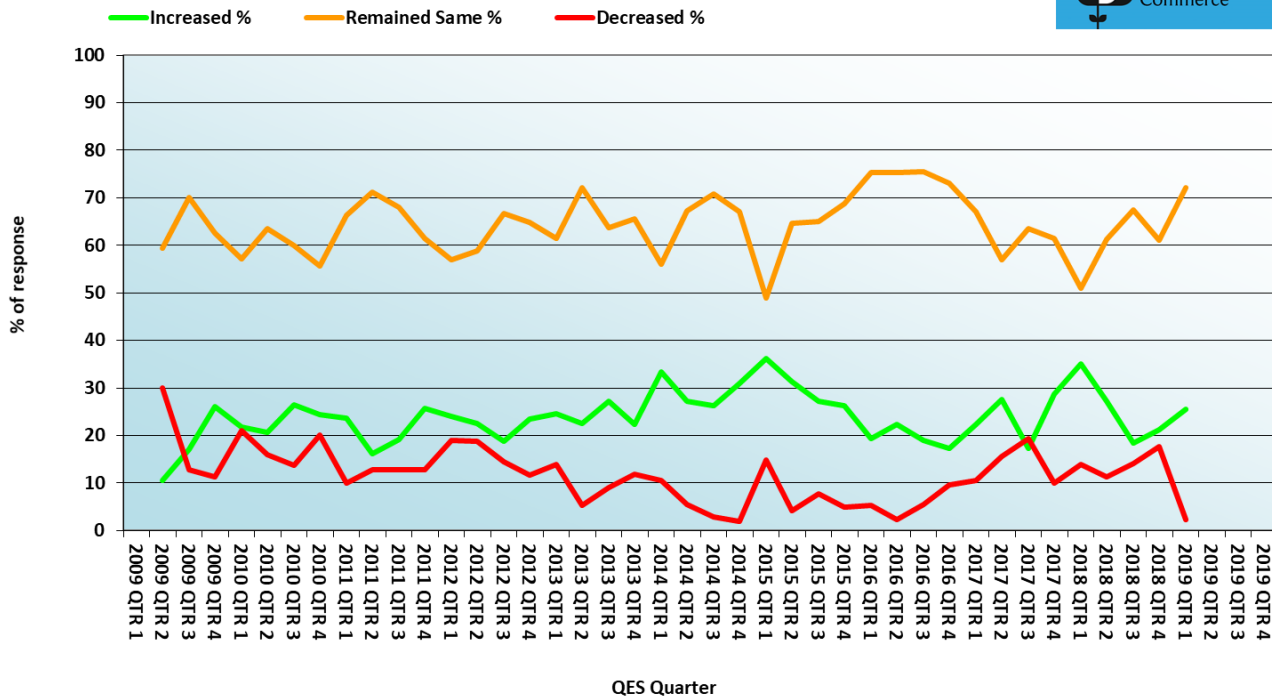


INVESTMENT

Investment Plans - Plant & Machinery

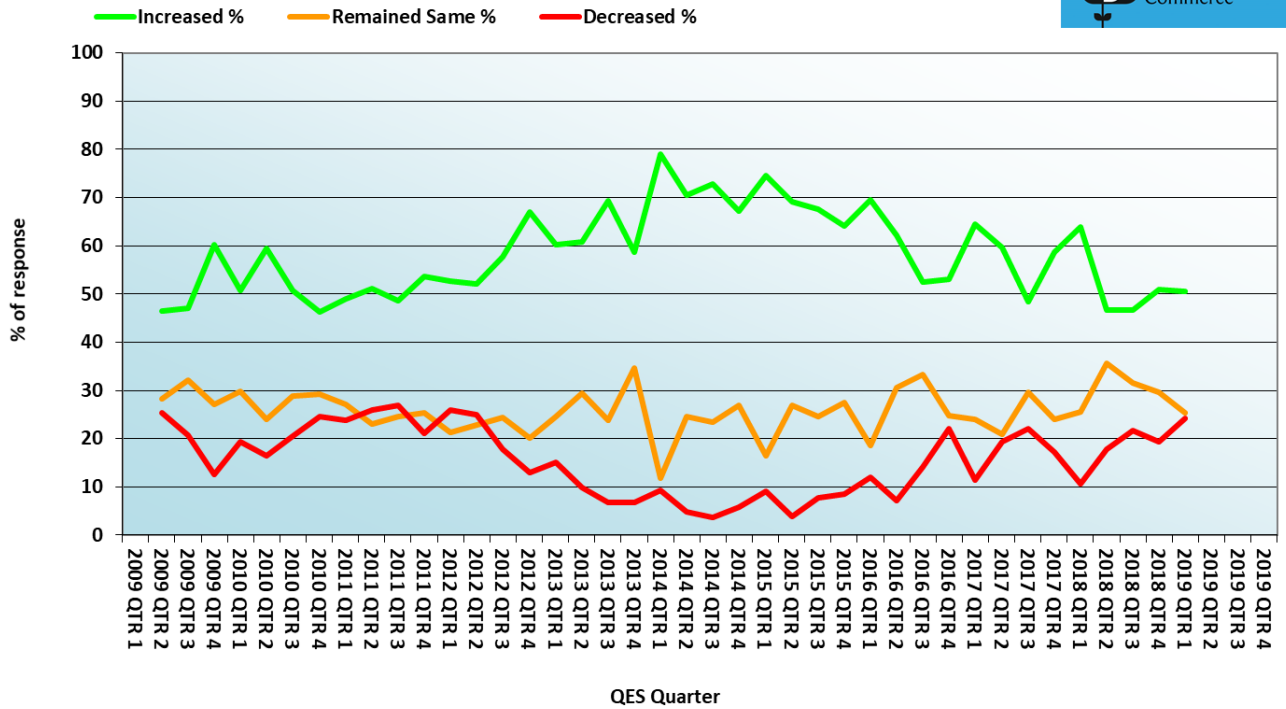


Investment Plans - Training

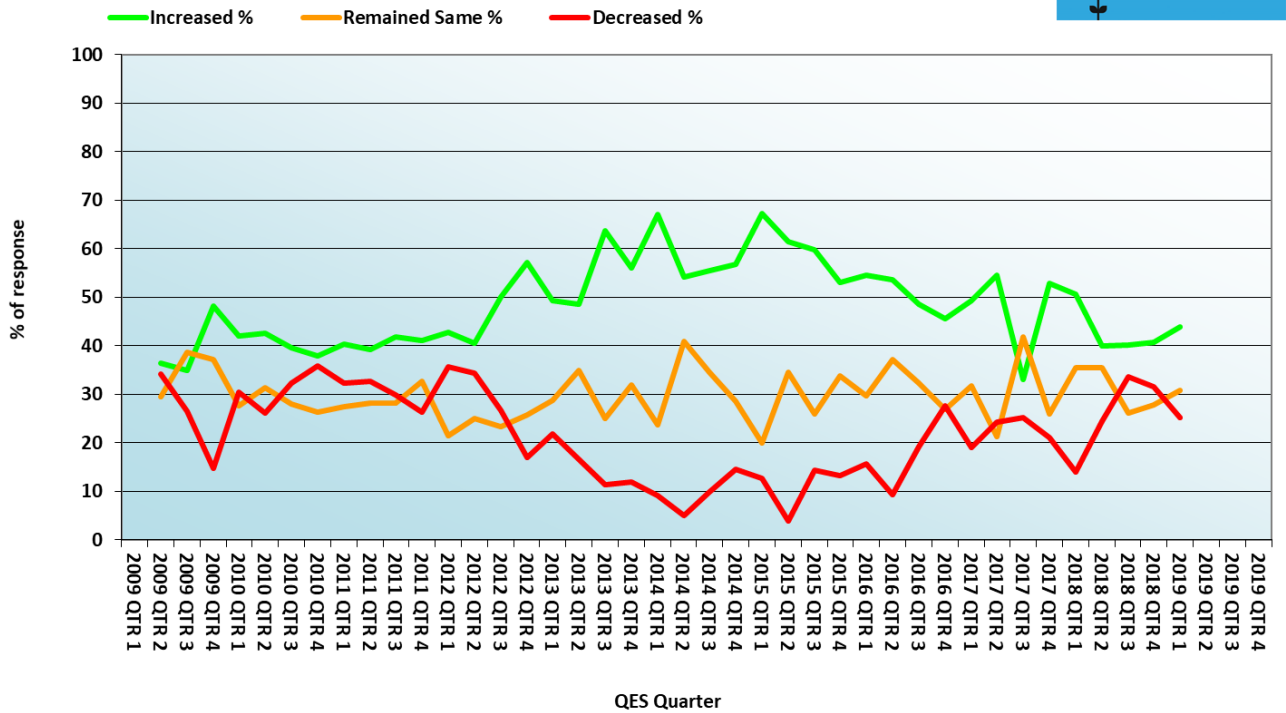


CONFIDENCE

Turnover Confidence - view of the next 12 months



Profitability Confidence - view of the next 12 months



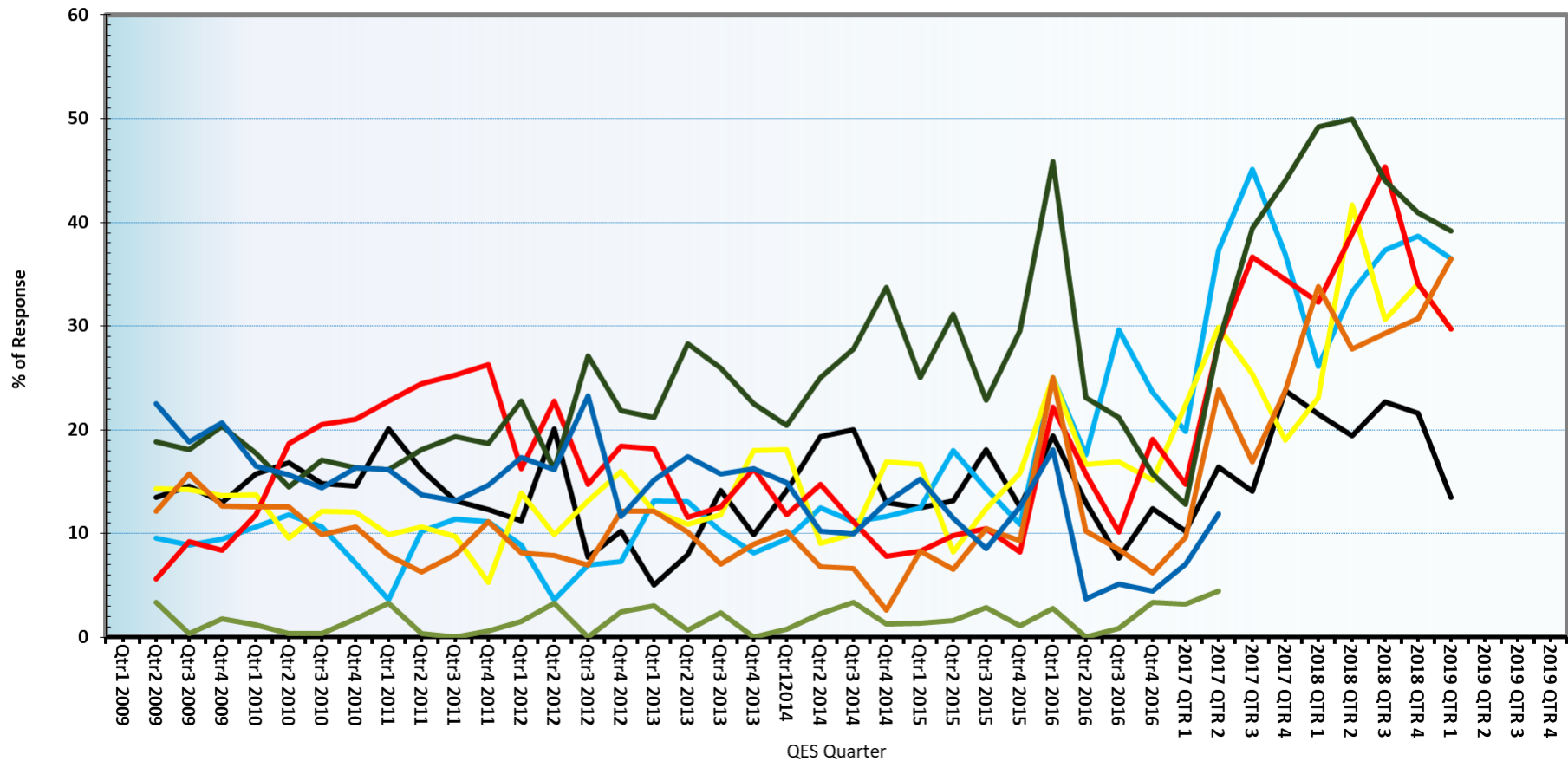
FEAR FACTORS

External Factors - Fear Factors

This chart depicts the most feared external factors that are felt may affect the respondents business. (Factors in brackets are no longer asked.)



— Interest Rates — Exchange Rates — Business Rates — Inflation — Competition — Corporate Tax/Taxation — (Better Industrial Relations) — (Improved Cash Availability)



OTHER FACTORS

GDPR - have the steps you had to take or were advised to take had any impact on your ability to market or sell your product or services?



(local question)

- Very negative effect
- Somewhat negative effect
- No change
- Somewhat improved effect
- Greatly improved effect
- Too early to tell

